



Advanced 12-Lead Review

Satisfies Medical Control Renewal for Paramedics

COURSE TYPE

CONTINUING MEDICAL
EDUCATION (CME)

COST

FREE

AUDIENCE

PRE-HOSPITAL ALS CAREGIVERS

LOCATION

Stratford EMS Headquarters
2712 Main Street
Stratford, CT 06615 USA

CONTACT INFORMATION

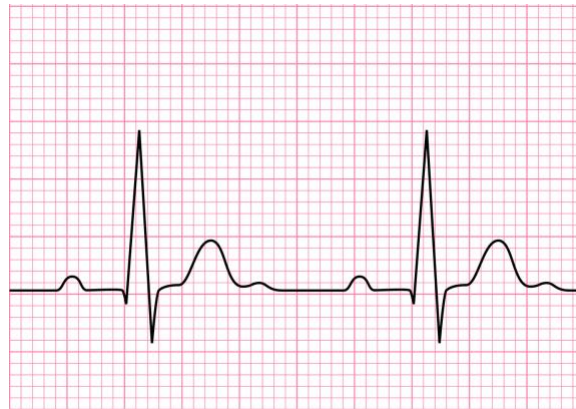
Eileen Brophy,
Operations/Training Supervisor
Office: 203-385-4060
ebrophy@townofstratford.com

Or

Mike Loiz
Director of EMS
Office: 203-385-4060
mloiz@townofstratford.com

Or visit: stratfordems.org

Stratford EMS
Visit us @ Stratfordems.org



Date: Friday, December 14th, 2018

Time: 1800-2000

Location: Stratford EMS Headquarters, 2712 Main Street, Stratford, CT 06615

Cost: There is no cost for this training session

CME: 2.0 hours (SHCGB)

Description: This 2 hour Continuing Medical Education session hosted by Stratford EMS will cover Advanced 12-Lead Review. This review satisfies medical control renewal requirements for paramedics.

Intended Audience: ALS providers

Lecturer: Jeff McGovern, BS, NR-P, FP-C, CCP-C, C-NPT

Jeffrey McGovern is the Clinical Coordinator at Yale New Haven Hospital Center for EMS. Jeff has over twenty years of EMS experience, seventeen as a paramedic, including critical care ground and rotor wing transport. His certifications include Nationally Registered Paramedic (NR-P), Certified Flight Paramedic (FP-C), Certified Critical Care Paramedic (CCP-C) and Nationally Certified Neonatal Pediatric Transport (C-NPT). He is also a former member of the Yale New Haven Children's Hospital's Pediatric Critical Care Transport Team. Jeff has been an instructor with YNH CEMS for over 10 years during which time he served as their ALS Programs Coordinator, lead paramedic instructor and AHA Regional Faculty in ACS and PALS. Jeff is a State of CT EMS Instructor and Licensed Paramedic.

To register for this CME, please click one of the links below or visit our website:
www.stratfordems.org. There is no cost for this CME session.

[SEMS MEMBERS](#)

[NON-MEMBER REGISTRATION](#)



Town of Stratford,
Connecticut